



KÖSTER Attica Spout 300*80*300 mm black Technical Data Sheet RT 917 003 B

Issued: 2021-10-11

Rectangular attica spout made of PE, black

Features

- Horizontal flat roof drainage and emergency drainage through the parapet
- Right angles curved
- Guaranteed maximum backwater-free water drainage
- Direct welding of the KÖSTER TPO / ECB roofing membrane onto the tray
- Weather resistant
- Long-term stabilized
- Impact resistant modified
- UV-resistant
- Excellent functionality through tested, norm-compliant discharge values
- DIN EN 12056 Part 3 - Roof drainage
- DIN 1986 part 100 - Drainage systems for buildings and properties
- DIN EN 1253 - Processes for buildings
- DIN 18195 - Structural waterproofing
- DIN 18531 - Waterproofing for non-trafficked roofs

Technical Data

- Color: Black
- Cross-section (width x height): 300 x 80 mm
- Width of the tray flange: 100 mm
- Pipe length: 300 mm
- Pipe inclination 5 °
- Mounting opening (width x height): 310 x 90 mm

Drainage performance

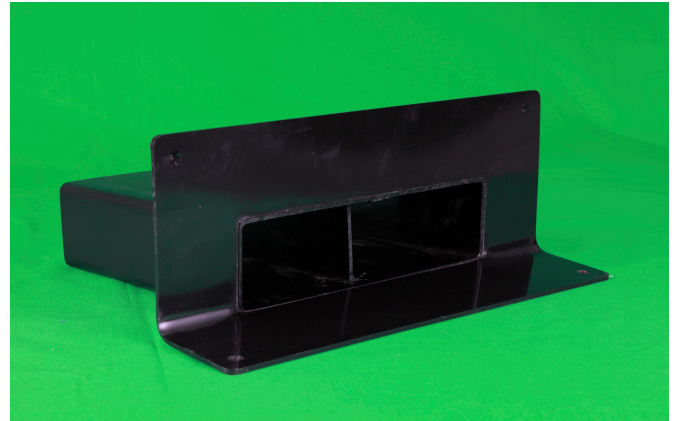
Accumulation height	35 mm	75 mm
Drainage capacity /sec	3,0	9,6

Fields of Application

Horizontal flat roof drainage and emergency drainage through the attica

Application

The installation of the KÖSTER Attica Spout is carried out according to the KÖSTER installation instructions and the KÖSTER TPO installation instructions from KÖSTER BAUCHEMIE AG.



Packaging

RT 917 003 B piece

Safety

Obey all local, state, and governmental safety regulations when installing.

Related products

KÖSTER ECB 2.0	Prod. code RE 820
KÖSTER ECB 2.0 U	Prod. code RE 820 052 U
KÖSTER TPO 1.5	Prod. code RT 815
KÖSTER TPO 1.5 SK (FR)	Prod. code RT 815 SK (FR)
KÖSTER TPO 1.8	Prod. code RT 818
KÖSTER TPO 2.0	Prod. code RT 820
KÖSTER TPO 2.0 F	Prod. code RT 820 F
KÖSTER TPO 2.0 F (FR)	Prod. code RT 820 F (FR)
KÖSTER TPO 2.0 U	Prod. code RT 820 U

The information contained in this technical data sheet is based on the results of our research and on our practical experience in the field. All given test data are average values which have been obtained under defined conditions. The proper and thereby effective and successful application of our products is not subject to our control. The installer is responsible for the correct application under consideration of the specific conditions of the construction site and for the final results of the construction process. This may require adjustments to the recommendations given here for standard cases. Specifications made by our employees or representatives which exceed the specifications contained in this technical guideline require written confirmation. The valid standards for testing and installation, technical guidelines, and acknowledged rules of technology have to be adhered to at all times. The warranty can and is therefore only applied to the quality of our products within the scope of our terms and conditions, not however, for their effective and successful application. This guideline has been technically revised; all previous versions are invalid.